

## AGENDA

**Meeting:** PEWSEY AREA BOARD  
**Place:** Woodborough Social Club, Smithy Lane, Pewsey, SN9 5PL  
**Date:** Monday 3 November 2014  
**Time:** 7.00 pm

---

Including the Parishes of Alton, Beechingstoke, Burbage, Buttermere, Charlton and Wilsford, Chirton and Connock, Easton, Grafton, Great Bedwyn, Ham, Little Bedwyn, Manningford, Marden, Milton Lilbourne, North Newnton, Patney, Pewsey, Rushall, Shalbourne, Stanton St Bernard, Upavon, Wilcot, Huish and Oare, Woodborough, Wootton Rivers

---

**The Area Board welcomes and invites contributions from members of the public. The chairman will try to ensure that everyone who wishes to speak will have the opportunity to do so.**

If you have any requirements that would make your attendance at the meeting easier, please contact your Democratic Services Officer.

**Refreshments and networking opportunities will be available from 6:30pm.**

---

Please direct any enquiries on this Agenda to Kevin Fielding (Democratic Services Officer), on 01249 706612 or email [kevin.fielding@wiltshire.gov.uk](mailto:kevin.fielding@wiltshire.gov.uk)  
Or Caroline Brailey (Pewsey Community Area Manager) 01225 718609 or email [caroline.brailey@wiltshire.gov.uk](mailto:caroline.brailey@wiltshire.gov.uk)

All the papers connected with this meeting are available on the Council's website at [www.wiltshire.gov.uk](http://www.wiltshire.gov.uk)

Press enquiries to Communications on direct lines (01225) 713114 / 713115.

---

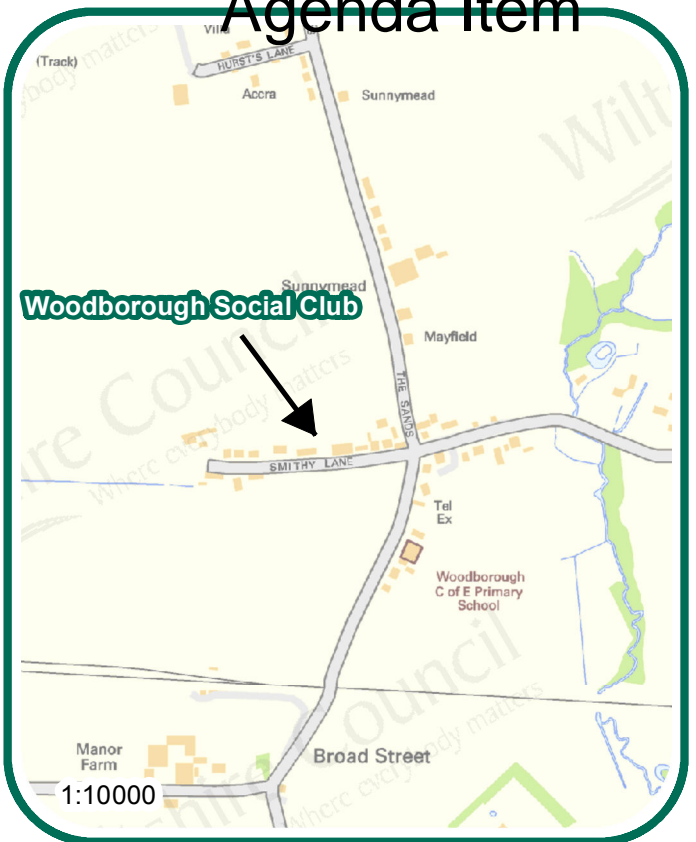
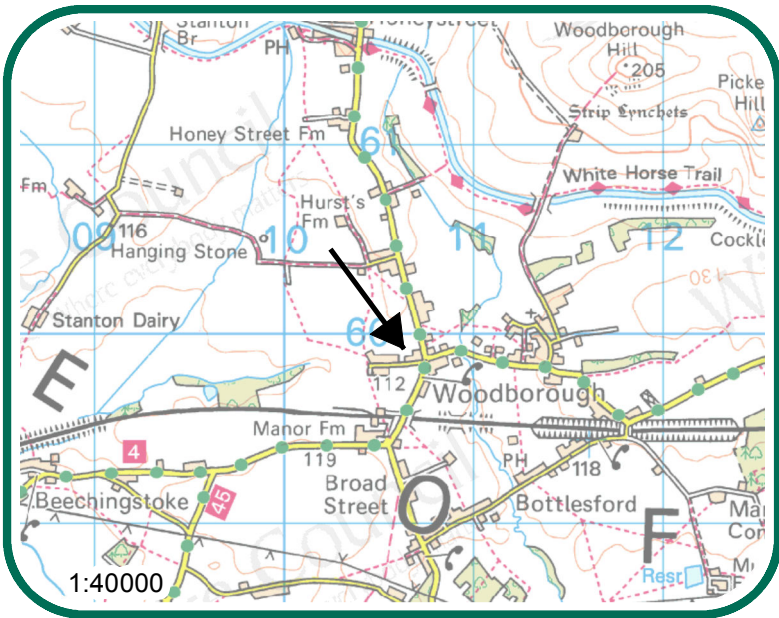
### Wiltshire Councillors

Jerry Kunkler	Pewsey
Paul Oatway	Pewsey Vale
Stuart Wheeler	Burbage + Bedwyns

***Map enclosed at page 1***

	<b>Time</b>
<p>1      <b>Welcome and Introductions</b></p>	<b>5 mins</b>
<p>2      <b>Apologies for Absence</b></p>	
<p>3      <b>Minutes</b></p> <p>To confirm the minutes of the meeting held on Monday 15<sup>th</sup> September 2014.</p>	
<p>4      <b>Declarations of Interest</b></p> <p>To receive any declarations of disclosable interests or dispensations granted by the Standards Committee.</p>	
<p>5      <b>Chairman's Announcements</b> (<i>Pages 3 - 6</i>)</p> <p>a. Wiltshire's Car Parking Review.</p> <p>b. Changes to Electoral Registration.</p>	
<p>6      <b>Youth Activity</b></p> <p>To receive a report and agree LYN Management Committee membership and to delegate authority for expenditure between meetings.</p>	<b>15 mins</b>
<p>7      <b>Bus Consultation - update</b></p> <p>Colin Gale – Pewsey Community Area Partnership.</p>	<b>10 mins</b>
<p>8      <b>Neighbourhood Development Plan</b></p> <p>Peter Deck - Pewsey Parish Council.</p>	<b>10 mins</b>
<p>9      <b>Partner Updates</b></p> <p>To receive any updates from partner organisations:</p> <p>9a      <b>Wiltshire Police</b></p> <p>9b      <b>Wiltshire Fire and Rescue Service</b></p>	<b>20 mins</b>

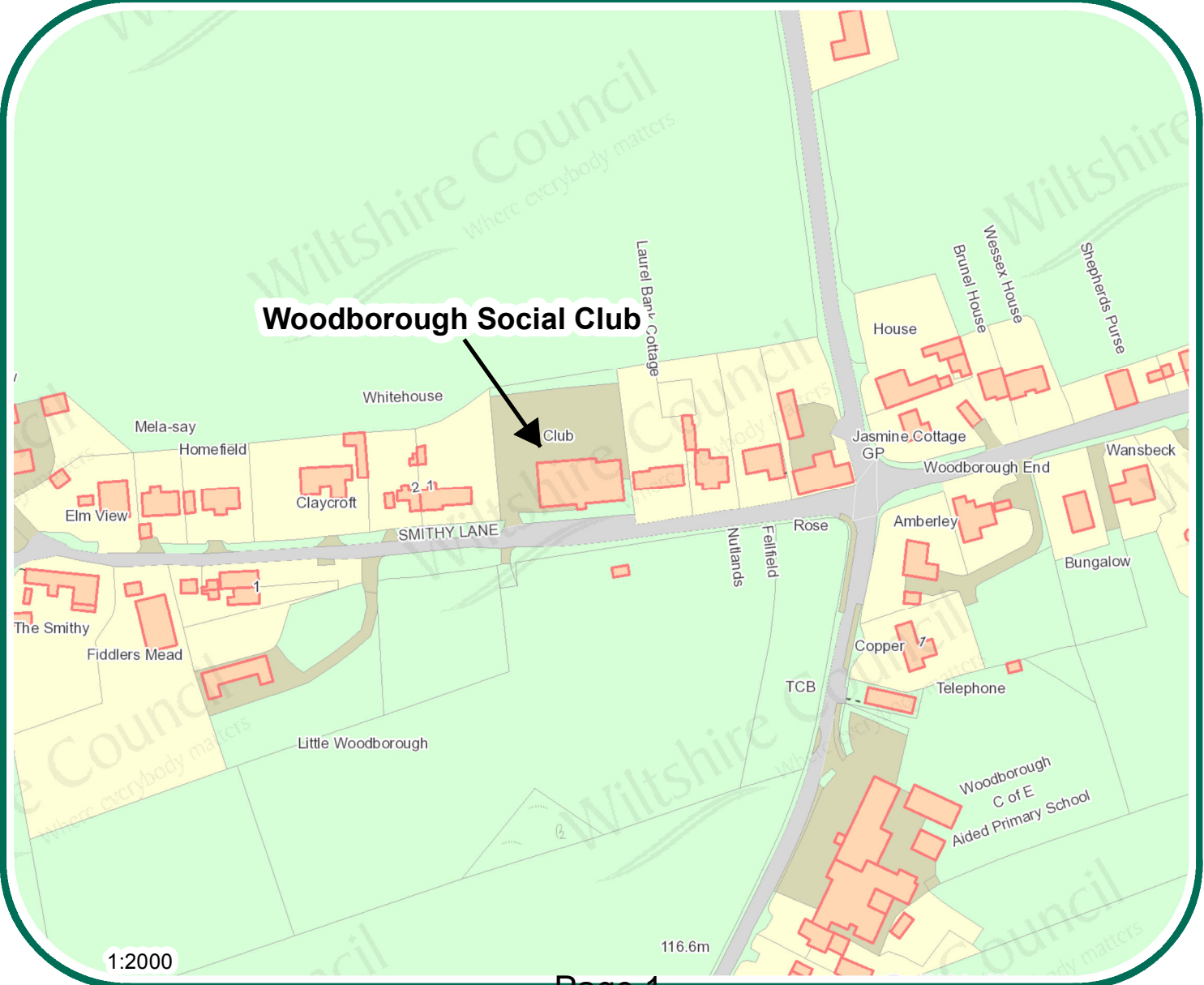
	9c	<b>Wiltshire Clinical Commissioning Group (CCG)</b>	
	9d	<b>Pewsey Community Area Partnership</b>	
	9e	<b>Parish Councils</b> ( <i>Pages 7 - 8</i> )	
	9f	<b>Pewsey Area Campus Team</b>	
	9g	<b>Good Neighbour Scheme</b>	
	9h	<b>Army Rebasing</b>	
10		<b>Community Area Transport Group (CATG) - Update &amp; Recommendations</b> ( <i>Pages 9 - 12</i> )	<b>10 mins</b>
		Pedestrian Access to Pewsey Station – presentation by Spencer Drinkwater.	
11		<b>Community Area Grants</b> ( <i>Pages 13 - 22</i> )	<b>10 mins</b>
		To determine any applications for Community Area Grants.	
12		<b>Urgent Business</b>	<b>5 mins</b>
		Time permitting, the Chairman will invite questions and comments on issues not covered elsewhere in the agenda.	
13		<b>Future Meeting Dates and Close</b>	
		The next meeting of the Pewsey Area Board is scheduled for Monday 12 <sup>th</sup> January 2015, 7pm at the Woodborough Social Club.	



**Woodborough Social Club,  
Smithy Lane,  
Pewsey  
SN9 5PL**



**Woodborough Social Club**



This page is intentionally left blank

# MINUTES

**Meeting:** PEWSEY AREA BOARD  
**Place:** Pewsey Vale School, Wilcot Rd, Pewsey SN9 5EW  
**Date:** 15 September 2014  
**Start Time:** Time Not Specified  
**Finish Time:** Time Not Specified

---

Please direct any enquiries on these minutes to:

Will Oulton (Senior Democratic Services Officer), Tel: 01225 713935 or (e-mail) [william.oulton@wiltshire.gov.uk](mailto:william.oulton@wiltshire.gov.uk)

Papers available on the Council's website at [www.wiltshire.gov.uk](http://www.wiltshire.gov.uk)

---

## **In Attendance:**

### **Wiltshire Councillors**

Cllr Jerry Kunkler (Chairman)  
Cllr Chris Williams, as substitute  
Cllr Stuart Wheeler (Vice Chairman)

Councillor Laura Mayes (Cabinet Member)

### **Wiltshire Council Officers**

Caroline Brailey, Community Area Manager  
Will Oulton, Senior Democratic Services Officer  
Matthew Carbine, Multi Media Officer  
Zachary Goodman, Multi Media Officer  
Maggie Rae, Corporate Director  
Sharon Smith, Communications Officer

### **Parish Councils**

Alton Parish Council – Steve Hepworth  
Burbage Parish Council – Glenda Pearce, Steve Colling  
Charlton and Wilsford Parish Council – , Richard Lowe  
Easton Parish Council –, Margaret Holden  
Grafton Parish Council – Susie Brew  
Manningford Parish Council - Sue Lympos  
Pewsey Parish Council –Curly Haskell, Alex Carder, Peter Deck, Andrew Whitney, Terry Eyles

Rushall Parish Council – Colin Gale  
Shalbourne Parish Council – Stella Zweck, Peter Blanthorn  
Upavon Parish Council – Bob Greatorex,  
Wilcot and Huish Parish Council – Dee Nix ,Dawn Wilson

**Partners**

Wiltshire Police – Matt Armstrong  
Pewsey Campus Team – Curly Haskell  
Pewsey Community Area Partnership (PCAP) – Susie Brew, Dawn Wilson  
Clinical Commissioning Group - Dr Stephen Rawlings  
Clinical Commissioning Group - James Slater  
Wiltshire Fire & Rescue Service - Graham Weller, Jason Underwood

**Members of Public in Attendance: 42**

**Total in attendance: 66**

---



<u>Agenda Item No.</u>	<u>Summary of Issues Discussed and Decision</u>
27	<p><u>Welcome and Introductions</u></p> <p>The Chairman welcomed everyone to the meeting and introduced the Area Board Members, the officers and the visiting cabinet representative, Councillor Laura Mayes.</p>
28	<p><u>Apologies for Absence</u></p> <p>Apologies for absence had been received from Councillor Paul Oatway, who was replaced by Councillor Chris Williams for the duration of the meeting.</p>
29	<p><u>Minutes</u></p> <p><b><u>Decision</u></b>  <b>The minutes of the meeting held on 7 July 2014 were agreed as a correct record and signed by the Chairman.</b></p>
30	<p><u>Declarations of Interest</u></p> <p>There were no declarations of interest.</p>
31	<p><u>Chairman's Announcements</u></p> <p>The Chairman drew the meetings attention to the announcement, circulated with the agenda, regarding a wide ranging consultation to consider options for the future of Wiltshire Fire &amp; Rescue. The consultation had started on the 21 July and would run until the 20 October 2014. It was noted that information could be found in public buildings, including libraries, and consultation forums will be held with the public, businesses and voluntary organisations. With those with access to internet, the consultation portal can be found at <a href="http://www.wiltshire.gov.uk/strengtheningourfrs">www.wiltshire.gov.uk/strengtheningourfrs</a></p> <p>The Chair noted the Army Rebasing update, which had been circulated at the meeting and uploaded to agenda webpage, and that a further update would be available in November.</p>
32	<p><u>Better Care Plan</u></p> <p>Maggie Rae, Corporate Director – Wiltshire Council, and Dr Steve Rawlings – Chair of the Clinical Commissioning Group (CCG), presented the item which gave a summary of the Better Care Plan. The presentation included a short video outlining the changes and the impacts on service and their users.</p>

The focus of the presentation was about how best to join up Health and Social Care, thereby reducing the frustrations in the community who just want the system to work. A big step would improve the sharing data, so someone only has to give their information once.

There was an explanation of the demographic pressures i.e that people are living longer and healthier lives, and that this growth in an ageing population means that more people will need more care. It is estimated that half of NHS resources are being spent on the elderly, and that the number of people with dementia should double by 2030. Although £800m was being spent on health and social care in Wiltshire, additional funding would be needed, if we are to carry on as we are.

It is the intention to have improved plans in place to support carers, who provide informal care; to put individuals at the centre of the care; to enable people to be listened to and to have care provided in their home, or close to their home.

It is planned that a person would have one professional that will be their one point of contact. Multi-disciplinary teams should link up to provide co-ordinated health and social care. Reference was made to the onion diagram which explains how services are provided around for individuals and located on geographical areas.

In response to a question, Maggie Rae encouraged people to attend Savernake Hospital to see what services are available on the site. One of the aims of the plan was to divert people from secondary care, which was expensive, into primary and community care. It was acknowledged that some consultants from Great Western Hospital use Savernake to see patients but some people were not aware of this.

There was also a vision that facilities in GP surgeries should be extended so that Minor Injuries could be closed. It would be cheaper and more effective to provide it in primary care, and this would be a reflection of the kind of services GPs and previously offered in the community. Dr Rawlings acknowledged that GPs could do more to publicise the services that are available at Savernake Hospital and would take that message back to the CCG.

Maggie Rae acknowledged that getting the right staff into rural areas could be a challenge. It was vitally important that personal care staff are seen as part of the workforce and not 2<sup>nd</sup> grade workers. The Council took the decision, with the Help to Live at Home programme, to pay travel and to pay for outcomes not 15 min appointments; it would cost more, but she was proud that it meant more quality care. The intention is to make it a more attractive career, and it was hoped that returning forces families from Germany could provide more staff.

It was noted that the investment going into the Campus could play a part in the Better Care Plan. Work was ongoing to ensure there are some health facilities in each Campus development. It was planned that there should be a clinical room in the Pewsey plans. For this to succeed, GPs will need to buy into the clinical

	<p>room and the Campus ideal. In response to a question about pharmacy dispensing in Pewsey, Dr Rawlings stated that he would direct any concerns to the relevant CCG Committee.</p> <p>In response to a question, James Slater – Local Commissioner CCG – stated that GPs were open to explore around what services they can provide in their communities. Furthermore he stated that there is a duty to consult and that he wanted to link with Patient Participation Groups.</p> <p>The Chair thanked the officers for the presentation and for answering questions from the floor.</p> <p><i>Admin Note: Further information, including a summary of the plan, can be found on the Council's Website.</i></p> <p><a href="http://www.wiltshire.gov.uk/healthandsocialcare/socialcareadults/bettercareplan.htm">http://www.wiltshire.gov.uk/healthandsocialcare/socialcareadults/bettercareplan.htm</a></p>
33	<p><u>Youth Activity Review and Area Board Youth Funding</u></p> <p>Cllr Laura Mayes, Cabinet Member for Children's Services, presented an update following the recent youth activity review and explained how area boards can help provide activities in line with the priorities of the community area. The area board considered the guidance and the Terms of Reference for Local Youth Networks, circulated on the 10 September.</p> <p>Along with other services of the Council, the Children's Service was required to make financial savings. This budgetary pressure had provided an opportunity to redesign and diversify services, reaching more children. Safeguarding, looking after the most vulnerable, remained a priority for the new model.</p> <p>It was clear from the consultation that children want more involvement in what is delivered for them. A top down model, with static youth centres, does not deliver all that is required. In rural areas and cities the services are very different, so a one-size-fits-all service would not be fit for the future. It was also clear that there are a wide range of activities provided by the community, particularly in an area such as Pewsey.</p> <p>The Council decided, in May, to adopt a Community Led option and, with the community work together to design services. There will still be a Community Youth Officer to go out into the Community with area boards getting devolved funding. Each area board would create a Local Youth Network to advise them on the priorities for spending their devolved budget. Some youth support will still be provided as 1-2-1 work with very vulnerable young people, and this would continue to be funded centrally.</p> <p>In response to a question, Councillor Mayes stated that it was hoped that the new model would enable activities to be delivered to a larger number of children.</p>

	<p>If the Community wanted to prioritise activities for particular groups of isolated children, or to address the issue of transport, then it would for the LYN to recommend that services be commissioned to address these issues.</p> <p>It was intended to have some facilities in the Campus for young people, but that there would be gap between these facilities being available and the closure of current facility. It was confirmed that Campus facilities would be funded from Property Service not using the Pewsey Area Board youth funding.</p> <p>In response to a question, Councillor Mayes stated that £1.3 million had been saved in Youth Services across the Council which was an equivalent to making about 44 people redundant. She did not have the figures to hand as to how much that equated to in the Pewsey area.</p> <p>The Chair thanked Councillor Mayes for her presentation and for answering questions from the floor.</p> <p>The meeting was also asked to consider two urgent applications, outlined in the report. As the funding had yet to be released the area board was asked to decide whether they were minded to support the applications and to delegate authority to the officer to award the grants once the monies had been allocated for the area board's use.</p> <p><b><u>Resolved:</u></b></p> <ol style="list-style-type: none"> <li><b>1. To note the guidance;</b></li> <li><b>2. To adopt the Terms of Reference for the Pewsey Area Local Youth Network;</b></li> <li><b>3. To ask officers to take the necessary steps to set up the Pewsey Area Local Youth Network; and</b></li> <li><b>4. To delegate authority to the Community Area Manager (in consultation with the Chair), to award monies from the youth fund, once it has been allocated, as follows:</b> <ol style="list-style-type: none"> <li><b>a. Pewsey Vale School, Breakfast Club - £2000</b></li> <li><b>b. Great Bedwyn Youth Club, Animation Project - £331</b></li> </ol> </li> </ol>
34	<p><u>Pewsey Campus Update</u></p> <p>Curly Haskell presented an update regarding the Campus Project. He unveiled the proposed logo and name: The Vale Community Campus, which was chosen as it represents the wider community.</p> <p>A representative from B3 architects, who supported the project, presented a 3D animation walk-through which showed how the leisure centre, school and new pool would be designed and linked up through a joint reception area. The new</p>

	<p>sports hall will be the same size but will be refurbished. It was confirmed that there would be no impact on the allotments. The internal finishings, furnishings and equipment had not been designed yet. There would be a new gym planned on the first floor, 50% bigger than the existing gym, a new studio facility for activities, multipurpose rooms that could be used for youth activities, meeting rooms will available to the public and services, the police and Wiltshire Council staff to use. The facility would comply with the relevant access requirement legislation and was designed to be easily cleaned and managed.</p> <p>With regards to the project timescale, it was hoped that plans would be soon be submitted and, pending planning approval, a contractor would be appointed with a view to completion of the project in 2016.</p> <p>Mr Haskell paid tribute to all those who had worked hard to develop the project and stated that the plans would be displayed in the Leisure Centre and Library over September, with further presentations and displays in village areas.</p> <p>The Chair congratulated all those involved in the project.</p>
35	<p><u>Area Grant Funding</u></p> <p>The area board considered a number of applications for Community Area Grant funding. The Chairman invited the local Councillor to introduce each application, following which a representative of the applicant was given an opportunity to give a brief overview of their project to the area board. The area board was also asked to allocate money from its Digital Literacy Fund and towards campus expenses.</p> <p><b><u>Decisions:</u></b></p> <ol style="list-style-type: none"> <li>1. Manningford Village Hall awarded £1,545 towards purchase and installation of acoustic panels. <i><u>Reason</u> - The application met the Community Area Grants criteria for 2014/15</i></li> <li>2. Manningford Parish Council awarded £500 towards purchase and installation of defibrillator <i><u>Reason</u> - The application met the Community Area Grants criteria for 2014/15</i></li> <li>3. Woodborough Road Safety Group awarded £446 for hedging to the path at the field in Smithy Lane to protect the privacy of residents <i><u>Reason</u> - The application met the Community Area Grants criteria for 2014/15</i></li> <li>4. Wilcot Cricket Club awarded, in principle, £5,000 towards a new pavilion,</li> </ol>

	<p>and that authority to release the funding be delegated to the Community Area Manager (in consultation with the Chair) subject to the following conditions:</p> <ul style="list-style-type: none"> <li>i) That the applicant submits a satisfactory update regarding their progress in securing the additional funding needed for the project by the end of January; and</li> <li>ii) That planning permission has been granted.</li> </ul> <p><i><u>Reason</u> - The application met the Community Area Grants criteria for 2014/15</i></p> <p>5. Pewsey Area Youth Council awarded £174 towards the purchase of XBOX driving equipment</p> <p><i><u>Reason</u> - The application met the Community Area Grants criteria for 2014/15</i></p> <p>6. Pewsey U3A awarded £400, from the Digital Literacy Fund, for the purchase of a laptop to enable the group to run a computer group.</p> <p>7. To allocate an additional £500 for campus expenses as previously agreed by the area board in September 2013.</p>
36	<p><u>Community Area Transport Group (CATG) 23rd July 2014</u></p> <p>The report arising from the latest CATG meeting held on 23July was presented and the Board asked to give approval to the recommendations contained within</p> <p><b><u>Decision:</u></b></p> <ul style="list-style-type: none"> <li>1. <b>To agree the payment by CATG of £1,000 for formal advert for the C38 speed limit review.</b></li> <li>2. <b>To add the Crossing in Goddard Road to the Priority List.</b></li> <li>3. <b>To add issue ref 535 - Increasing volumes of traffic using C52 (Manningford) as a rat run, to the Priority List.</b></li> <li>4. <b>To award funding towards issue ref 3489 - horse warning signs, Alton - £150.</b></li> <li>5. <b>To award funding towards issue ref 3493 - finger posts – Wootton Rivers £150.</b></li> <li>6. <b>To close issue ref 1594 – Parking at The Knapp.</b></li> </ul>

	<p>7. <b>To close issue ref 1884 - Footpath between Prospect and the French Horn.</b></p> <p>8. <b>To close issue ref 1931 – Footpath from Sunnyhill lane to Prospect.</b></p> <p>9. <b>To close issue ref 1723 – Speeding at Alton Priors.</b></p> <p>10. <b>To close issue ref 2700 – Street light at Pewsey Station .</b></p>
37	<p><u>Partner Updates</u></p> <p>(a) <u>Wiltshire Police</u></p> <p>The written update, circulated with the agenda, was noted.</p> <p>(b) <u>Wiltshire Fire and Rescue</u></p> <p>No written update was provided, save for that already made under the Chairman’s Announcements.</p> <p>(c) <u>NHS Wiltshire</u></p> <p>No written update was provided.</p> <p>(d) <u>Pewsey Community Area Partnership</u></p> <p>The written update, circulated with the agenda, was noted.</p> <p>(e) <u>Parish Councils</u></p> <p>The written updates, provided by North Newnton Parish Council and Wilcot &amp; Huish Parish Council, were noted.</p> <p>(f) <u>Pewsey Community Area Young People’s Issues Group (CAYPIG)</u></p> <p>No written update was provided.</p> <p>(g) <u>Extended Services</u></p> <p>No written update was provided.</p>
38	<u>Wiltshire Police</u>
39	<u>Wiltshire Fire and Rescue Service</u>
40	<u>Wiltshire Clinical Commissioning Group (CCG)</u>

41	<p><u>Pewsey Community Area Partnership</u></p> <p>A video was show, link below, about the Pewsey art project that was organised in conjunction with the Tour of Britain.</p> <p><a href="https://www.youtube.com/watch?feature=player_embedded&amp;v=NX63ZtcaLa4">https://www.youtube.com/watch?feature=player_embedded&amp;v=NX63ZtcaLa4</a></p>
43	<p><u>Pewsey Youth Advisory Group (YAG)</u></p>
44	<p><u>Pewsey Area Campus Team</u></p>
45	<p><u>Good Neighbour Scheme</u></p>
46	<p><u>Urgent Business</u></p> <p>There were no urgent items.</p>
47	<p><u>Future Meeting Dates and Close</u></p> <p>The next meeting of the Pewsey Area Board was scheduled for 3 November 2014, 7pm at Woodborough Social Club, Smithy Lane, Woodborough.</p> <p>The Chairman thanked everyone for attending.</p>



## Wiltshire's Car Parking Review Chair's Announcement

### Introduction

Wiltshire Council is reviewing its car parking service and has completed a pre consultation assessment, which was undertaken in May and June of this year. It has also reviewed the evidence from the community workshops held in May. The findings of the pre-consultation exercises have been combined with parking data to form the basis of the next stage of the review.

The review focuses on car parking charges and management, with the potential use of new technologies and the future role of local communities. The review also covers other aspects such as parking standards, first hour free parking and other charging exemptions.

We are keen to hear the views of residents to help us shape the new strategy. The Council has made no decisions and would like to see how far you agree or disagree with the presented options, or alternatively suggest your own. Therefore, we have produced consultation documents which can be viewed at <http://consult.wiltshire.gov.uk/portal> (not available until the 27<sup>th</sup> October 2014). Hard copies of the background evidence will also be available at local libraries and the main council offices. The online questionnaire and one possible charging option will be available for viewing and completion from the 10<sup>th</sup> November.

The consultation will be open from 27th October 2014 to the 16th January 2015.

### How to respond

Our preferred method to receive comments is through completion of the on-line electronic questionnaire (please note that there is no requirement to register or log-in to the portal to respond to this pre-consultation exercise).

Paper copies of the questionnaire will also be available on request by phoning the below number

Your comments need to be submitted by **5pm on 16<sup>th</sup> January 2015**.

If you have any queries, please contact us using the details below or by telephone on 0300 456 0100.

Sustainable Transport Group  
Highways and Transport  
Wiltshire Council  
County Hall  
Bythesea Road  
Trowbridge  
Wiltshire  
BA14 8JN  
By email to: [transportplanning@wiltshire.gov.uk](mailto:transportplanning@wiltshire.gov.uk)

This page is intentionally left blank

## Chairman's Announcements

<b>Subject:</b>	<b>Changes to the Electoral Registration System</b>
<b>Officer Contact Details:</b>	Donna Mountford - Communications Officer
<b>Further details available:</b>	<a href="http://www.gov.uk/yourvotematters">www.gov.uk/yourvotematters</a>

### Summary of announcement:

Over the summer, all Wiltshire residents will receive a letter through the post telling them about the biggest change to the electoral registration system in nearly 100 years.

The letter will explain that a new, more secure, system of Individual Electoral Registration is being introduced to replace the old Victorian system where the "head of household" registered everyone living in a property. Now, each individual will be responsible for registering themselves.

Many Wiltshire residents will automatically move onto the new electoral register. However, some will need to take action to join or remain on the register, which they will now also be able to do quickly and easily online. People will need to provide their National Insurance Number and date of birth when registering. This will be used to verify that the person making the application is who they say they are and will in turn reduce the risk of fraud and inaccurate entries on the register.

This summer the Electoral Commission is running a major advertising campaign that will raise awareness of the change to Individual Electoral Registration. Leaflets are also available here tonight for you to take away with you.

For more information visit [www.gov.uk/yourvotematters](http://www.gov.uk/yourvotematters) .

This page is intentionally left blank

**Positive Activities for Young People - Update to Pewsey Area Board 3 November 2014**

---

**Pewsey Local Youth Network**

**Proposed Membership of the Management Group**

Jerry Kunkler	- Pewsey Area Board
Dawn Wilson	- Pewsey Community Area Partnership
Jason Underwood	- Wiltshire Fire and Rescue
Jill Shankland	- Parent Support Adviser
Simon Shaw	- Pewsey Parish Council/Pewsey Youth Council
Mark Bond	- Pewsey Primary School
Wendy Spencer	- Pewsey Campus Community Operations Board
Police Officer	- Pewsey NPT
Young Person 1	
Young Person 2	
Young Person 3	It is proposed that up to 6 young people be named members their names are not available at the time of writing but will be given at the meeting
Young Person 4	
Young Person 5	
Young Person 6	
Karen Brown	- Community Youth Officer (non voting member)
Caroline Brailey	- Community Area Manager (non voting member)

**Update**

A youth engagement event is taking place on Wednesday 29 October. Young people have been invited to find out more about the Local Youth Network and to ask if they would like to join the wider group or the management group of which there are up to 6 places. A cup cake decorating activity plus refreshments (tea/coffee/biscuits/squash) will be provided.

The adults named above have been invited to join the Local Youth Network and to attend the event on 29 October.

The engagement event incurs costs of £29 for room hire, £50 for the activity and £5 for refreshments. Authorisation was given by the Head of Community Governance and Area Boards as it was felt that this event needed to go ahead before the LYN membership was put before the Pewsey Area Board.

**Budget**

The budget for the area board allocated for positive activities for young people is as follows:-

2014/15 - £9,906 + youth service under spend of £20,627

2015/16 - £16,160

## **Recommendations**

1. **Recommendation** that the Pewsey area board approves the membership of the LYN management group, and approves the expenditure occurred to date for the engagement event held on 29 October.
2. In line with our approach with community area grants in respect of urgent matters that may arise from time to time between meetings that the Community Area Manager, in consultation with the Community Youth Officer and the Chairman of Pewsey Area Board, be granted delegated authority to approve expenditure not exceeding £500 from the youth budget for projects in relation to positive activities for young people.

**Recommendation** that authority be delegated to the Community Area Manager to approve expenditure of up to £500 for urgent projects falling between area board meetings. A report explaining such decision and the reasons why it was considered to be urgent shall be reported to the next ordinary meeting of the Pewsey Area Board

3. It is possible that up to £500 in total for the year might be spent facilitating some meetings such as the one on 29 October which incurred room hire costs. Future meetings of the LYN will be held in the fire station community room which is free, as often as possible.

**Recommendation** that authority be delegated to the Community Area Manager to manage a budget of up to £500 to cover expenditure related to the management of the LYN meetings. A report giving details of any expenditure incurred will be reported to the next ordinary meeting of the Pewsey Area Board

Report Author: Caroline Brailey, Pewsey Community Area Manager

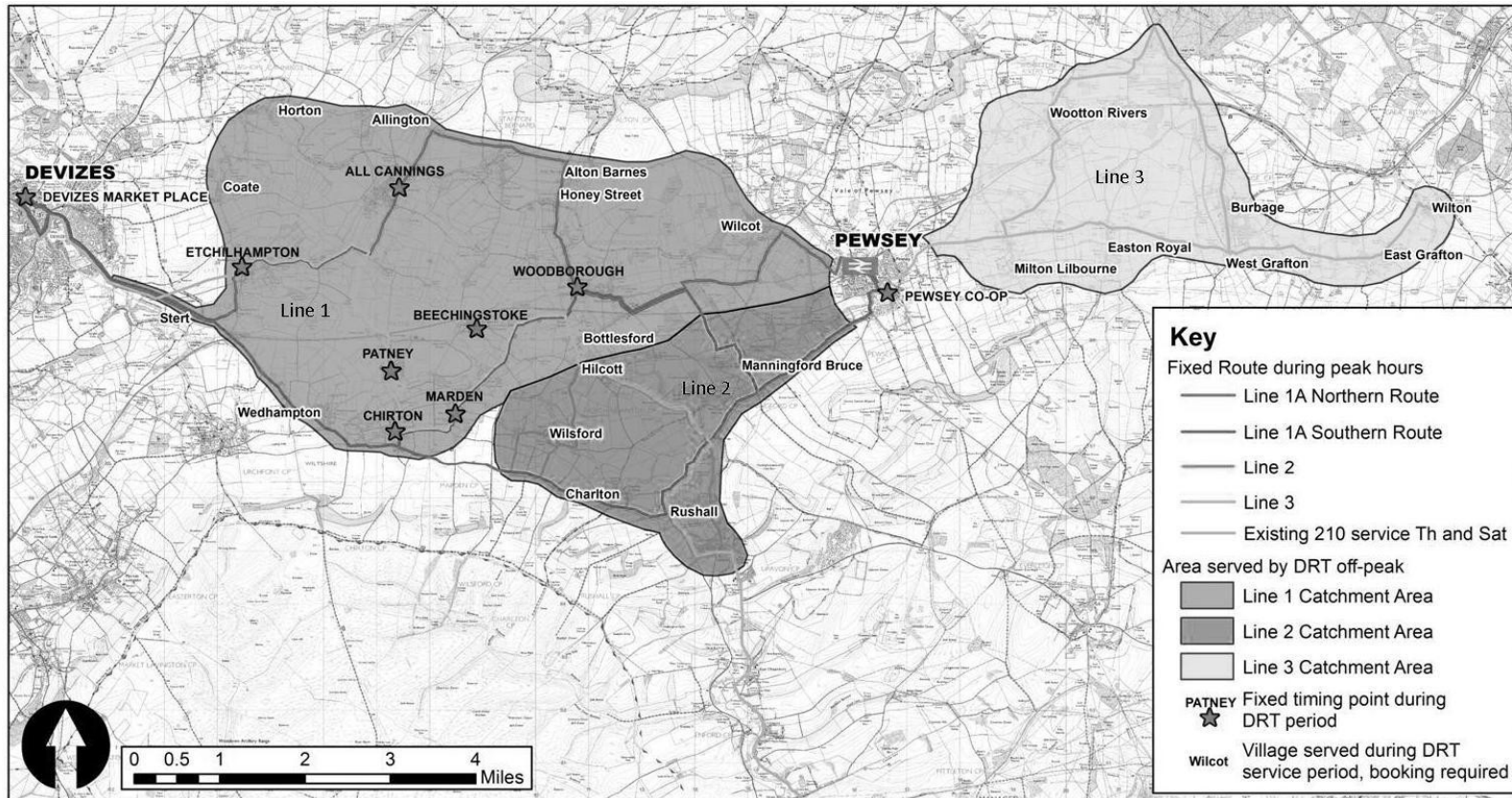
Tel No: 01225 718609

E-Mail: [caroline.brailey@wiltshire.gov.uk](mailto:caroline.brailey@wiltshire.gov.uk)

# PEWSEY VALE CONNECT2 WILTSHIRE BUSES

## PROPOSED CHANGES TO SERVICES

### HAVE YOUR SAY!



## Introduction

Wiltshire Council consulted the public last spring on a revised Connect2 Wiltshire bus service in the Pewsey Vale. Some changes were well received, but there were many concerns about others. Together with Devizes and Pewsey Community Area Partnerships, an alternative option has been developed. The Council now wants to hear your views on this option.

The review is needed partly because Wiltshire Council has to make savings in running public transport, and partly to trial long standing suggestions for improvements over the next year. The savings are unavoidable, but the service improvements might provide some compensation.

In principle it is felt that the savings should target the call centre, rather than cut the levels of service. The current call centre costs almost as much as one bus. It is only necessary if there are large numbers of bookings and if bookings at very short notice are required.

The new option introduces faster fixed timetables (which many people prefer to booking systems) to the larger villages at all times, but keeps the flexible bookable daytime service for the smaller villages. This results in a smaller number of bookings that can be handled locally at much lower cost.

## New Services

**New Line 1:** The new route combines circular Lines 1 and 2 and replaces them with two 'new Line 1' buses running directly between Devizes and Pewsey without the need to change mid-Vale. This also means that the journey times into and out of the towns will be the same, unlike at present where a return journey involves going round the circles.

**New Lines 2 and 3:** The new Line 2 area will serve the southern part of existing Line 2 to Pewsey and will be operated by the third bus, which also provides a service in the new Line 3 area east of Pewsey. The buses in these areas are not as well used as elsewhere. To an extent they are covered by other bus routes, so a somewhat reduced frequency is proposed, spread throughout the day.

**Evening Services:** Loss of evening services around Pewsey was one of the main concerns in the previous consultation. A new reduced service has been reintroduced, subject to additional funding being agreed. It is therefore important to make your views heard so that the level of support and need can be clearly understood.

**Rail Link:** The opportunity has also been taken, in conjunction with the greater use of fixed timetables, to improve the bus/ rail connections to Pewsey Station.

Further details on all these proposed services are given below.

***Do you agree with the approach? Are we missing anything? Do any of the changes affect you directly?***

***Please answer the questions on the final page, and add any other comments you may have and return it to the address at the bottom of that page by 10<sup>th</sup> December 2014.***

***This is your chance to say what you think of the changes. There is still time to adapt the services to meet real needs.***

***For more information or a questionnaire in word please go to [www.dcap.org.uk](http://www.dcap.org.uk) or [www.pewseycap.org.uk](http://www.pewseycap.org.uk)***



## New Line 1 services

The area served by new Line 1 is shown on the map at the front of this leaflet. It is proposed that new Line 1 services would operate in two different ways at different times of day:

- **1A Monday – Friday** would operate a direct service in the morning and afternoon peak hours, broadly before 0900 and after 1630; on fixed routes; and alternate between the north and south areas of the Pewsey Vale. It would serve as many of the villages as practicable. *See timetable on page 4.*

These services would be relatively fast, taking around 45 minutes between Pewsey and Devizes. They also provide fast rail link services to and from Pewsey Station. *See further details about the rail link on page 7.*

Page 21

**1B Monday - Friday** would operate in the off-peak hours, broadly between 0900 and 1630 on weekdays; on a fixed timetabled route between Woodborough and All Cannings via Beechingstoke, Marden, Chirton, and Patney. All services would go through Etchilhampton and Wilcot. All other villages in the new Line 1 area would continue to be served in this off-peak period by a flexible bookable service as at present. The journey time between Pewsey and Devizes would be between 1 hour and 1 hour 15 minutes, leaving a large allowance for deviations from the core route. It may be that this is over-generous in practice and could be reduced. *See timetable on page 4.*

- **1A and 1B Saturday** timetable is somewhat different, with a later service start and earlier final run; fewer fixed route services; and somewhat lower service frequency, as only one bus would be in operation in the new Line 1 area on Saturdays. *See timetable on page 5.*

**Connections:** The new Line 1 timetable has been devised to provide reasonable connections with the 49 bus (Swindon-Trowbridge) at Devizes and the X5 (Swindon-Salisbury) as often as possible. Although the emphasis of the rail link is on fast peak hour bus connections, Line 1B also offers some daytime rail connections for residents not on the fixed routes.

**The existing 210 service** that is operated by Tourist Coaches is shown on the route map. Although not part of the new operation, it is envisaged that this would continue. It provides an additional service each way between Upavon (and beyond) and Devizes on Thursdays and Saturday mornings.

---

## KEY to codes used on the timetables on the following pages:

#	- Calls if required by passengers on the bus, or to pick up pre-booked passengers
R	- Calls only if required to set down passengers already on the bus
x	- Picks up on the main road – not inside the village
DS	- Also calls at Devizes School on Schooldays
Thurs	- This journey only runs on Thursdays
210	- Service 210 only runs on Thursdays and Saturdays

**NEW LINE 1 WEEKDAY TIMETABLE**

Route	1A	1A	1A	1B	1B	1B	Thurs 210	1B	1B	1A	1B	1B
<b>Devizes Market Place</b>	<b>0630</b>	<b>0710</b>	<b>0750</b>	<b>0850</b>	<b>1015</b>	<b>1150</b>	<b>1230</b>	<b>1330</b>	<b>1510</b>	<b>1710</b>	<b>1730</b>	<b>1850</b>
Stert road end	0636	--	0756	#	#	#	1236	#	DS	1719	R	R
Etchilhampton	--	0719	--	0900	1025	1200	1239	1340	#	--	1745	R
Little Horton & Coate	--	--	--	#	#	#	--	#	#	--	--	--
Horton & Allington	--	--	--	#	#	#	--	#	#	--	--	--
All Cannings	--	0726	--	0913	1038	1213	--	1353	1533	--	1755	1905
Stanton St Bernard	--	0729	--	#	#	#	--	#	R	--	R	#
Wedhampton	0639x	--	0759x	#	#	#	--	#	R	1722x	--	--
Patney	--	--	0804	0918	1043	1218	1245	1358	1538	--	R	#
<b>Chirton</b>	<b>0641x</b>	--	<b>0801</b>	<b>0924</b>	<b>1049</b>	<b>1224</b>	<b>1248</b>	<b>1404</b>	<b>1544</b>	<b>1724</b>	R	#
Marden	--	--	#	0927	1052	1227	1252	1407	1547	1727	R	#
Beechingstoke	--	--	0808	0933	1058	1233	--	1413	1553	--	R	#
Alton Barnes	--	0732	--	#	#	#	--	#	R	--	R	#
Honey Street	--	0733	--	#	#	#	--	#	R	--	R	#
<b>Woodborough</b>	--	<b>0735</b>	<b>0814</b>	<b>0938</b>	<b>1103</b>	<b>1238</b>	<b>1256</b>	<b>1419</b>	R	<b>1732</b>	<b>1815</b>	<b>1925</b>
Bottlesford and Hilcott	--	--	#	#	#	#	--	#	R	--	R	#
Manningford Bruce	0658x	--	0827	--	--	--	--	--	--	1742	--	--
Wilcot	--	0742	--	#	#	#	--	#	--	--	R	#
<b>Pewsey Co-op/ North Street</b>	<b>0704</b>	<b>0751</b>	<b>0833</b>	<b>1000</b>	<b>1125</b>	<b>1300</b>	--	<b>1440</b>	<b>1620</b>	<b>1748</b>	<b>1835</b>	<b>1945</b>
<b>Pewsey railway station</b>	<b>0708</b>	<b>0755</b>	--	<b>1005</b>	<b>1130</b>	<b>1305</b>	--	--	--	<b>1752</b>	<b>1840</b>	<b>1948</b>
Pewsey Vale School (Sch days)			0838									

Page 22

Route	1A	1A	1B	Thurs 210	1B	1B	1B	1B	1B	1A	1A	1A
<b>Pewsey railway station</b>	<b>0708</b>	<b>0756</b>	<b>0839</b>	--	<b>1025</b>	<b>1210</b>	<b>1335</b>	--	--	<b>1755</b>	<b>1855</b>	<b>1955</b>
<b>Pewsey Co-op/ North Street</b>	<b>0704</b>	--	<b>0833</b>	--	<b>1030</b>	<b>1215</b>	<b>1340</b>	<b>1530</b>	<b>1625</b>	<b>1800</b>	<b>1900</b>	<b>1959</b>
Pewsey Vale School (Sch days)							1535					
Wilcot	0716	0802	0845	--	#	#	#	#	R	--	1907	--
Maningford Bruce	--	--	--	--	--	--	--	--	--	1806	--	2005x
Hilcott and Bottlesford	--	--	#	--	#	#	#	--	R	R	--	--
Woodborough	0723	0811	0904	0955	1050	1235	1400	1555	1640	1823	1916	--
Beechingstoke	--	--	0909	--	1055	1240	1405	1600	R	--	--	--
Marden	0729	--	0915	0959	1101	1246	1411	1606	R	1832	--	--
Chirton	0732	--	0918	1003	1104	1249	1414	1609	R	1835	--	2017
Wedhampton	0734x	--	#	--	#	#	#	#	--	1837x	--	2019x
Patney	--	--	0922	1006	1108	1253	1418	1613	R	--	--	--
Honey Street	--	0813	#	--	#	#	#	#	R	--	1918	--
Alton Barnes/ Priors	--	0814	#	--	#	#	#	#	R	--	1919	--
Stanton St Bernard	--	0816	#	--	#	#	#	#	R	--	1921	--
All Cannings	--	0819	0932	--	1117	1302	1427	1622	1700	--	1924	--
Allington & Horton	--	--	#	--	#	#	#	#	--	--	--	--
Little Horton & Coate	--	--	#	--	#	#	#	#	--	--	--	--
Etchilhampton	--	0828	0945	1013	1130	1315	1440	1635	1710	--	1933	--
Stert road end	0740	--	#	1016	#	#	#	#	--	R	--	2022
<b>Devizes Market Place</b>	<b>0746</b>	<b>0845</b>	<b>0955</b>	<b>1024</b>	<b>1140</b>	<b>1325</b>	<b>1450</b>	<b>1645</b>	<b>1725</b>	<b>1849</b>	<b>1940</b>	<b>2028</b>

**IMPORTANT**

*The last journeys at 1850 journey from Devizes and at 1955 from Pewsey would be an extension to the current C2W operating period and would require additional funding.*

*To help decide whether or not additional funding would be justified, it is important for you to say how important this service would be to you or your household.*

**Please see page 3 for details of what the codes mean.**

## NEW LINE 1 SATURDAY TIMETABLE

	1A	1B	1B	1B	210	1B	1B	1B
<b>Devizes Market Place</b>	<b>0710</b>	<b>0750</b>	<b>0850</b>	<b>1150</b>	<b>1230</b>	<b>1315</b>	<b>1710</b>	<b>1850</b>
Stert road end	--	0756	#	R	1236	R	R	#
Etchilhampton	0719	--	0900	R	1239	R	R	#
Little Horton & Coate	--	--	#	R	--	R	R	--
Horton & Allington	--	--	#	R	--	R	R	--
All Cannings	0726	--	0913	R	--	1335	1730	1905
Stanton St Bernard	0729	--	#	R	--	R	R	#
Patney	--	--	0918	R	1245	R	R	#
Wedhampton	--	0759	#	--	--	R	R	--
Chirton	--	0801	0922	#	1248	1345	R	#
Marden	--	0804	0925	R	1252	R	R	#
Beechingstoke	--	0810	0931	R	--	R	R	#
Alton Barnes	0732	--	#	R	--	R	#	#
Honey Street	0733	--	#	R	--	R	#	#
Woodborough	0735	0815	0938	1230	1256	1405	1750	1925
Bottlesford & Hilcott	--	#	#	R	--	#	#	--
Manningford Bruce	--	0831	--	--	--	--	--	--
Wilcot	0742	--	#	--	--	#	#	1932
<b>Pewsey Co-op/ North St</b>	<b>0751</b>	<b>0837</b>	<b>1000</b>	--	--	<b>1425</b>	<b>1805</b>	<b>1941</b>
<b>Pewsey railway station</b>	<b>0755</b>	--	<b>1005</b>	--	--	--	<b>1808</b>	<b>1945</b>

Page 23

	1A	210	1B	1B		1B	1B	2
<b>Pewsey railway station</b>	<b>0756</b>	--	<b>1025</b>	--	--	--	<b>1815</b>	<b>1815</b>
<b>Pewsey Co-op/ North St</b>	--	--	<b>1030</b>	--	--	<b>1455</b>		<b>1820</b>
Wilcot	0802	--	#	--	--	#	1821	--
Manningford Bruce	--	--	--	--	--	--	--	1827
Hilcott & Bottlesford	--	--	#	#	--	#	R	--
Woodborough	0811	0955	1050	1235	--	1515	1830	--
Beechingstoke	--	--	1055	1240	--	1520	--	R
Marden	--	0959	1101	1246	--	1526	--	R
Chirton	--	1003	1104	1249	--	1529	--	1843
Wedhampton	--	--	#	--	--	#	--	1845
Patney	--	1006	1108	1252	--	1533	--	R
Honey Street	0813	--	#	--	--	#	R	--
Alton Barnes/ Priors	0814	--	#	--	--	#	R	--
Stanton St Bernard	0816	--	#	--	--	#	R	--
All Cannings	0819	--	1117	1257	--	1542	1840	--
Allington & Horton	#	--	#	--	--	#	--	--
Little Horton & Coate	#	--	#	--	--	#	--	--
Etchilhampton	0835	1013	1130	1304	--	1555	1847	--
Stert road end	--	--	#	--	--	#	--	R
<b>Devizes Market Place</b>	<b>0845</b>	<b>1024</b>	<b>1140</b>	<b>1312</b>	--	<b>1605</b>	<b>1855</b>	<b>1905</b>

## New Line 2 and 3 services

## New Line 2 and 3 services

The service areas of new Lines 2 and 3 are shown on the map at the front of this document.

**New Line 2** covers the southern part of the current Line 2 area, including Upavon, Rushall, Charlton, Wilsford, and the Manningfords.

**New Line 3** covers much of the central part of the current Line 3 area, from Pewsey via Burbage and as far as Wilton, but also northwards to Wootton Rivers. This area has much lower levels of ridership than the Line 1 and 2 services, especially to the East of Burbage, but following concerns raised during the previous consultation it is proposed to continue to provide some runs to the Graftons and Wilton.

**New Lines 2 and 3** will be operated by one bus alternating between the two areas, giving an approximately two hourly daytime frequency on each service. This bus will also operate a **Pewsey Town Service** on a circular route three times a day. *See timetable on page 6.*

It is not possible to run the bus on both routes at peak times for journeys to work in Pewsey and the bus is also needed for dedicated primary school run. However, parts of the new Line 2 area would be served by Line 1A on some of the peak hour fixed routes, and by the X5 from Upavon, so priority has been given to providing the best peak hour runs in the new Line 3 area out to Burbage.

There are no significant differences between the weekday and Saturday timetables other than the absence of school runs. *See timetables on page 6.*

**NEW LINE 2 TIMETABLE**

**MONDAY- FRIDAY**

Route	1A	1A	2	2	2	2	2
Pewsey railway station	--	--	#	--	--	--	1800
Pewsey Co-op	--	--	1035	1250	1425	1645	1805
Manningford Bruce	--	--	#	#	#	#	R
Upavon Ship Inn	--	--	#	#	#	#	R
Upavon Square	0650	--	#	#	#	#	R
Rushall A342	0646	--	#	#	#	#	R
Charlton	--	--	#	#	#	#	R
Wilsford	--	--	#	#	--	#	R
Hilcott triangle	--	#	#	#	#	--	--
Rushall School	--	--	#	#	#	#	--
Manningford Bruce	0655x	0823	#	#	#	#	--
Pewsey Co-op	0704	0833	1115	1330	1500	1720	--
Pewsey Rail Station	0708	--	--	--	--	--	--

**SATURDAY**

Route	2	2	2	2
Pewsey railway station	#	--	--	--
Pewsey Co-op	1035	1250	1425	1645
Manningford Bruce	#	#	#	#
Upavon Ship Inn	#	#	#	#
Upavon Square	#	#	#	#
Rushall A342	#	#	#	#
Charlton	#	#	#	#
Wilsford	#	#	--	#
Hilcott triangle	#	#	#	--
Rushall School	#	#	#	#
Manningford Bruce	#	#	#	#
Pewsey Co-op	1115	1330	1500	1720

Please see page 3 for details of what the codes mean

Page 24

**NEW LINE 3 TIMETABLE - MONDAY-SATURDAY**

**MONDAY - SATURDAY**

Pewsey Co-op	--	0905	1145	1345	1545	1720
Wootton Rivers	#	#	#	#	#	#
Burbage Stibb Green	#	#	#	#	#	#
Burbage PO	0740	#	#	#	#	#
Burbage Seymour Court	--	#	#	#	#	#
Wilton	--	#	#	--	#	--
East Grafton	--	#	#	--	#	--
West Grafton	--	#	#	--	#	--
Easton Royal	0744	#	#	#	#	#
Milton Lilbourne	0749	#	#	#	#	#
Pewsey Co-op	0756	1005	1245	1425	1640	1755
Pewsey railway station	0800	R	R	--	--	--

**NOTE: The journeys to Pewsey Vale School have been omitted from the above timetable as it may be necessary for these to be provided in a different way as part of these proposals.**

**PEWSEY TOWN SERVICE**

**MONDAY - SATURDAY**

Pewsey Co-op	1005	1115	1330
Broadfields	1010	1120	1335
Vale Rd & Old Hospital Rd	1015	1125	1340
Pewsey Co-op	1020	1130	1345

Please see page 3 for details of what the codes mean

## Evening Services

A concern in the previous consultation was the complete withdrawal of the 'Night Bus' services around Pewsey. Wiltshire Council has not yet identified funds for a continued evening service but undertook to review the previous proposal. A further consideration is the future need to integrate the evening service with activities at the Pewsey Campus.

The service is little used early in the week or mid-evening. The area covered could be reduced, and a smaller, more cost-efficient vehicle could be used. It is now suggested that the service could meet most needs and still deliver some savings by:

- Operating only on Wednesdays, Thursdays, Fridays and Saturdays.
- Remove one of the mid-evening runs
- Ceasing to operate as far afield as Marlborough.

### WEDNESDAY - SATURDAY

Links all villages in the Lines 2 and 3 areas via new Pewsey Campus	
Departs Pewsey Co-op to collect pre-booked passengers	
1830 #	Returns Pewsey co-op up to one hour later
2100 #	Returns Pewsey co-op up to one hour later
2210 #	Drop offs as required

#### **IMPORTANT:**

***Expenditure on a continued evening service needs to be carefully justified. It is very important for you AND/or your household to give as clear a picture as possible of what you want/need and your likely level of use.***

## Rail Link

Bus/ rail connections at Pewsey Station have been part of the C2W operation for many years, but the new Line 1 direct service between Devizes and Pewsey makes integration and development of the rail link much easier.

The rail link is geared towards services to and from London and Reading. The new Line 1 timetable provides good fast bus connections with morning and evening London trains at Pewsey Station, but also provides connections with daytime trains during the off-peak flexible bus operating period.

Bus departs From Devizes	Bus arrives at Pewsey Station	Train departs Pewsey Station	Train arrives at Paddington
0635	0708	0719	0838
0710	0755	0809	0921
0850	1005	1018	1124
1150	1305	1322	1454

Train departs Paddington	Train arrives at Pewsey Station	Bus departs Pewsey Station	Bus Arrives at Devizes
1636	1744	1755	1849
1733	1841	1855	1940
1835	1947	1955	2028

*See new Line 1 timetables for villages also served en route*

***IMPORTANT: The final (1955) evening bus journey is an extension to the current C2W operating period and would require additional funding. To help decide whether or not additional funding would be justified, it is important for you to say how important this journey would be to you and/or your household.***

# Please let us know your views on the proposed timetables

and return the completed form to the address below

## A. General Questions

- Q1. What town or village do you live in? \_\_\_\_\_
- Q2. Do you agree that, if savings have to be made, it is preferable to reduce call centre costs than to reduce the bus services themselves?  
 Yes     No     Not sure
- Q3. Do you agree in principle that new Line 1 services should run directly between Pewsey and Devizes rather than on circular routes as at present?  
 Yes     No     Not sure

## B. Daytime services, new Lines 1, 2, and 3

- Q4. Are you a user of the current C2W service?     Yes     No  
If yes, please say which service do you use most (Line 1, 2, or 3) \_\_\_\_\_
- Q5. If you answered Yes to Q4, will the changes to timetables: *(select only one)*
- a) Make much difference to the usefulness of the service?     Yes     No
- b) Improve the service as you use it at present?     Yes     No  
Please say in what way \_\_\_\_\_
- c) Improve the possibility of making other journeys?     Yes     No  
Please say in what way \_\_\_\_\_
- d) Make the service worse for meeting your travel needs?     Yes     No  
Please say why \_\_\_\_\_
- Q6. If you answered No to Q4: would the proposed changes to the timetable make it more likely that you would use the service?     Yes     No

## C. Evening services

- Q7. How often do you use the current Night Bus service?  
 regularly     occasionally     never
- Q8. If you answered regularly or occasionally to Q7, are the proposed changes acceptable to you? *Please tick yes or no for each change.*
- a) Service would not run on Mondays or Tuesdays     Yes     No
- b) there would be one less journey mid-evening     Yes     No
- c) Evening service would not run to Marlborough     Yes     No

## D. Rail Link

- Q9. Do you travel by train from Pewsey station? *(please tick one box)*  
 Yes, most days     Yes, most weeks     Occasionally     Rarely / never
- Q10. If you answered Yes to Q9, do you use the existing C2W rail link services to travel to/from Pewsey Station?     Yes     No  
If yes, is the new timetable an improvement for you?     Yes     No
- Q11. If you answered No to Q9, would you be more likely to use the rail link with the proposed timetable changes?     Yes     No
- Q12. Would the proposed additional later evening service influence your choice of whether or not to use the rail link buses?     Yes     No

## E. Publicising the new service

The success of the new services will depend on good marketing. If you would be able to be a Neighbourhood Representative, please tell us your email & postcode.

Email \_\_\_\_\_ Post code \_\_\_\_\_

Do you have any further comments about the proposals? *Please continue on a separate sheet if necessary*

Thank you for your help. Please return this form to: The Passenger Transport Unit, Wiltshire Council, Trowbridge BA14 7PX by 10<sup>th</sup> December 2014  
You can complete this questionnaire in word and email to buses@wiltshire.gov.uk. Please visit: www.dcap.org.uk or www.pewseycap.org.uk

## Update for Pewsey Area Board

<b>Update from</b>	<b>Charlton St Peter &amp; Wilsford Parish Council</b>
<b>Date of Area Board Meeting</b>	3 <sup>rd</sup> November 2014

### Headlines/Key Issues

- Friends of the Ridgeway are promoting Great Stones Way; they are placing way- marks and 'GSW' signs on Council and private property, without permission; a book has been published actively promoting GSW as a "a new, 36.5 mile walking route", which suggests that the path has been opened with approval from all parties and the publicity includes such statements as: "Stage 1 Coate Water to Barbury Castle – the official start".

This is unacceptable for FoTR to keep carrying on regardless of the views of the Parishes to the North of A342 and Wiltshire Council.

---

- 

---

- 

---

-

This page is intentionally left blank



## ***Update for Pewsey Area Board***

	<b>North Newnton Parish Council</b>
<b>Date of Area Board Meeting</b>	3 November 2014

### **Headlines/Key Issues**

Parishioners are most concerned about the proposed Reconstruction of the Wood Bridge on the A345 for the Autumn of 2015 and the traffic problems this will cause for surrounding parishes.

---

The defibrillator for North Newnton parish has arrived and will be installed in the next week or two. Thanks to Pewsey Area Board for a grant and also to everybody who has contributed, and for help and advice from Woodborough

---

The parish is in the process of producing an Emergency Plan and Flood Plan. A questionnaire is being circulated to all households to inform these plans.

---

Highways Speed limit review advertisement for sections 15 and 16 of C38 to be published before Christmas.

This page is intentionally left blank

## ***Update for Pewsey Area Board***

<b>Update from</b>	<b>Woodborough Parish Council</b>
<b>Date of Area Board Meeting</b>	3 November 2014

### **Headlines/Key Issues**

- Attended CATG on 2 October;
  - Awaiting outcome of 20 mph assessments et al for C38 / School (Broad Street) area
  - Will open negotiations with Highways on extensive road surface patching needed on parts of the C38 (in the vicinity of the Smithy Lane crossroads) and C261 (thru the village)

---
- Awaiting news on possible Metrocount in Smithy Lane

---

- Have received grant for additional planting in the area of the school field path – for which, many thanks

---

This page is intentionally left blank

### Meeting Notes and Recommendations to Pewsey Area Board 15 October 2014

#### **COMMUNITY AREA TRANSPORT GROUP** **MEETING HELD ON WEDNESDAY 15 October 2014**

##### **Attendees**

Jerry Kunkler – Pewsey Area Board  
Terry Eyles – Pewsey Parish Council  
Colin Gale – Rushall Parish Council  
Peter Deck – Pewsey Parish Council  
Patrick Wilson – Pewsey and District  
Chamber of Commerce  
Dawn Wilson – Wilcot and Huish Parish  
Council  
Noel Mascell – Upavon Parish Council

Paul Oatway – Pewsey Area Board  
Caroline Brailey – Wiltshire Council  
Mark Stansby – Wiltshire Council  
John Brewin – Woodborough Parish Council  
Carolyn Whistler – North Newton Parish  
Council  
Spencer Drinkwater – Wiltshire Council  
Richard Netherclift – Manningford Parish  
Council  
Paul Cowan – Upavon Parish Council

##### **1. Apologies**

Kristian Price

##### **2. Review of C38**

Highways are preparing a schedule ready for formal advert, this should happen this side of Christmas

##### **3. Maintenance Schemes 15/16**

Mark invited the group to consider if there are any roads that should be prioritised for next year – a list is being prepared by Highways but it isn't ready yet. There was a six year plan sent round with the 14/15 list. After some discussion it was agreed to accept the priorities as set by Highways.

##### **4. Budget**

Mark circulated the current budget which includes schemes that are being funded from LSTF. Expenditure is still quite low, but we are yet to get Grey Flags up and running and no revised price has been received yet for Bedwyn bridges. The current balance is £35k. Caroline asked if CATG funding could be used for rights of way improvements but the response from Spencer and Mark was no. It was asked if uncommitted money could be rolled over to next year based on current WC financial status. Mark & Spencer confirmed that rollover of uncommitted funds should be OK, based on previous experience.

##### **5. SID/CSW**

Colin reported that there are no community speed watch signs in Upavon at the camp and he was concerned that people might dispute the legitimacy of it, also that signs can help highlight the project and deter speeding. Mark said that he was aware that new signs had been delivered and suggested contacting highways to get some for this area. **Action Caroline** Carolyn asked for a list of active groups – **Action Caroline.**

##### **6. 20mph requests**

Data collection is now underway – metro counts and black box radar detection going out, plus various surveys (not high profile). **Action Paul Oatway to show plan of Smithy Lane to Mark –** hope to produce results for end of financial year

## **7. Parish Financial Contributions**

After a long discussion it was agreed that this be decided on a case by case basis.

## **8. Active Priority List Updates**

- a. Pedestrian Access to Pewsey Station - Spencer produced the latest plan and this is what will go out for consultation. He talked through the proposals so that the group could understand the benefits and potential disadvantages. The scheme will improve pedestrian access to the station by providing a footway on the western side between North Street and Buckleaze Lane, there will be a shuttle signal system and a puffin crossing on A345 near The Ridge. All junctions will need to be signalised. There will be a benefit to pedestrians, they will have a safe crossing and pedestrian walkway to and from the station from the village and a quicker journey time. There will be safety benefits, the speed of traffic will be reduced on the A345. The access to and from the station will be safer. There will be through traffic benefits to drivers, there will be no delays from vehicles meeting under the bridge, they won't have to wait for vehicles in and out of the car park. The potential disadvantages are that vehicles on the A345 will have to stop at the lights which they currently don't have to. The scheme will involve 5 sets of signal heads, 5 shown on the plan, the blue dots are secondaries, all have primary and secondary so can see from all areas. There will be a visual amenity impact and there will be double yellow waiting restrictions to ensure nobody parks and blocks and disrupts signals. It is not a very high aesthetic value conservation area but there will be an impact. The lights, except the two sets on the A345 will be efficient in that they will only show green when vehicles are there. In terms of waiting times, it is estimated that for morning and peak times 33 seconds, max 65 – extreme max of 100 seconds. This needs to go to the Parish Council and Area Board. It will regulate traffic and make it safer. Richard stressed the importance of taking into account the effect this might have on the C52. Money is available to continue with design – this is ongoing, and when that is done the works would only go ahead if the results from the consultation are positive. The project would then be ready to go if funding becomes available. **Action Peter Deck to put it to Pewsey PC and Spencer will address the Area Board on 3 November.**
  
- b. Footpath Grey Flags, Upavon - Mark reported that legal had sent another form for highways to complete, this has now been done and has been returned for them to rubber stamp. He has met the contractor and they are happy that they can construct under 2 way lights so there will be no road closure. From a highways point of view they can firm up price and once legals have been finalised then highways are ready to go. Still need parish council to get trees removed and fence erected. Paul confirmed that the legals are now with Wiltshire and ready to go. Parish Council are reluctant to take trees down as residents don't want to be without a fence all winter. **Action Mark will ask Donna to call Paul**
  
- c. Rail & Canal Bridge pedestrian safety Great Bedwyn - This is dragging due to number of agencies involved. There is a wooden pole supporting electric and telecoms equipment and a street light. Highways want to move the pole and are trying to get agreement. This is LSTF funded. The work has been scheduled for February
  
- d. Bus waiting area, Wilcot – a drawing was circulated. The scheme includes a hard standing area. and a bench. It didn't include a shelter but this could be considered at a later stage. The cost for the scheme as presented is £3,000 and is ready to go and it could be done in this year's programme Dawn said that in principal Wilcot and Huish Parish Council could contribute 10% towards cost –CATG costs therefore £2,700 – **Action Dawn to take proposal to Wilcot and Huish Parish Council and seek agreement for 10% contribution. Recommendation to Area**

**Board to agree contribution of £2,700 for this scheme.**

- e. Footpath A342 Rushall (Elm Row) – Mark reported that a feasibility study has been done – and concluded that there is not sufficient width along the verge for a footpath to construct a shared use path across face of Elm Row and then out to new development. Mark suggested that before going further and wasting any more time there needs to be discussions with landowners. Colin said that the land owner has refused a footpath over field. There are plans for development in Upavon. It was suggested that Rushall and Upavon Parish Councils discuss this issue together. Paul Oatway asked to be involved and Mark is also happy to meet on site. **Action Rushall and Upavon PC’s to meet, include Paul Oatway. Mark to make a site visit**
- f. Rushall, completion of footway from Old Barnyard to Church Lane – Mark to report at next meeting.

**9. Pewsey area board highway issues**

ID	Raised	Division	Issue	Latest Update
2742	08/01/13	Burbage and The Bedwyns	Speeding through East Grafton	The red patching has now been done. <b>Action Caroline to check if CSW now active and if so will request the area be added to SID rota</b>
2885	29/03/13	Pewsey	Speeding on Wilcot Road nr Schools	Still waiting for the school warning sign to be moved nearer to the school (currently near Rawlins Road)
2945	03/02/14	Pewsey	Speeding through Easton Royal	The new village sign has been installed, still waiting for the 30 speed limit signs.
3169	28/11/13	Pewsey Vale	Traffic from Devizes regularly overshoots the Rushall junction	Unraised painted box has been done, still waiting for the lines and 30 mph sign (different crew)
3302	27/07/12	Pewsey Vale	Dangerous Junction Cross Hayes Wilcot	All works have now been done – the plan now is to assess the situation. Paul has asked again for sweeper to stop and sweep on way to Pewsey (weekly) – it was suggested that the police be asked to prosecute people who fail to stop at the junction and cause a collision. <b>Action Paul</b> Also to consider the strips being raised <b>Action Dawn</b> to talk to nearby resident to ask how they would feel about it being raised rumble strips
3362	28/04/14	Pewsey	Signage needed for Heritage Centre	The order has now been placed for the signs and they should be installed soon.
3489	18/07/14	Pewsey to Vale	Request for Horse Warning Signs	<b>Action Mark</b> to liaise with Alton about the signage – the area board agreed to fund £150 towards this signage.
3493	19/07/14	Pewsey	Request for funding towards new finger post, Wootton Rivers	Area Board agreed to £150 contribution – parish sending invoice to highways and will purchase and install themselves – issue now closed
3547	20/08/14	Burbage and The Bedwyns	Request for 30mph limit at Durley Burbage	The group had already considered potential speed limit review areas and the areas with high collision rates were prioritised – this was third. <b>Action Mark</b> will look at the site and see if there can be any signage improvements

**10. Any other Business**

Peter asked Mark if he knew if the yellow lines at Broomcroft Road were finished yet. Mark said it wasn't his remit but he would look at the original traffic order and report back

**11. Date of next meeting** – 28 January 2015 – 2pm Pewsey Parish Office

**12. Recommendations to Pewsey Area Board**

Bus Waiting area, Wilcot Recommendation to Area Board to agree contribution of £2,700 for this scheme.

Report Author: Caroline Brailey, Pewsey Community Area Manager

Tel No: 01225 718609

E-Mail: [caroline.brailey@wiltshire.gov.uk](mailto:caroline.brailey@wiltshire.gov.uk)